

# XLR RECEPTACLES (Female)

## XLF 90° SERIES

Good contact connector with economical type(90° turned mount)



### Features

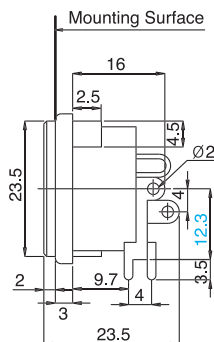
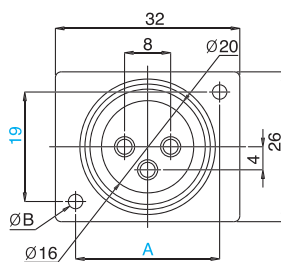
- 3 circuits male and female type
- Housing is made of thermoplastics material with glassfiber
- Vertical and horizontal P.C. Board mounting are available

### Applications

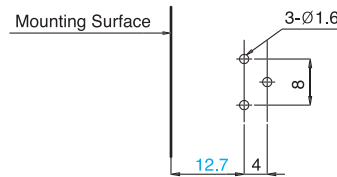
- Applicable to all types of electronic music instruments like as mixing console, graphic equalizer and stereo amplifier etc.

### Dimensions

XLF-3SP-5

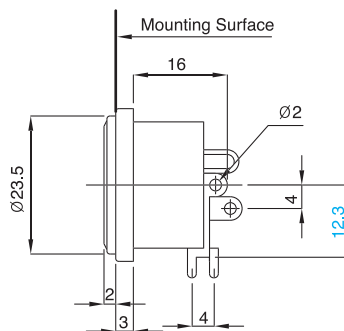
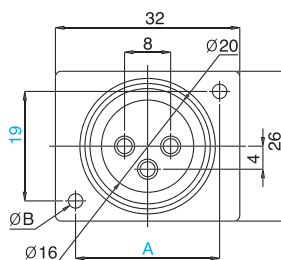


P.C.B Mounting Hole

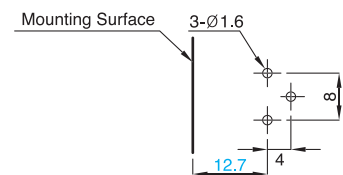


PART	A(mm)	B(φ)
#1	24.5	2.5
#2	24.5	3.5
#3	25	2.5
#4	25	3.5

XLF-3SP-7



P.C.B Mounting Hole



PART	A(mm)	B(φ)
#1	24.5	2.5
#2	24.5	3.5
#3	25	2.5
#4	25	3.5

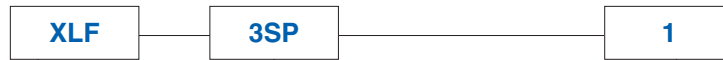
### General Specification

- Life : 10,000 Cycles Min.(Insertion / Withdrawal)
- Insertion / Withdrawal Force : 3~5kg · f/cm
- Contact Resistance : 20 mohms(Max.)
- Insulation Resistance : Over 100 Mohms
- Dielectric Withstanding Voltage : 500V AC
- Contact Rating : 25A, 48V DC

# XLR RECEPTACLES (Female)

## XL F SERIES

(FOR EXAMPLE)



MODEL	TERMINAL SHAPE	SOCKET MOUNTING	LOCKING REINFORCED PIN	REMARK
XLF-3SP-1	Soldering and P.C.B. In common	Hole	No	Refer to the DRG. on the page 104
XLF-3SP-2	Soldering and P.C.B. In common	Hole	Yes	See page 104
XLF-3SP-3	Soldering and P.C.B. In common	w/Boss	No	Refer to the below *1 and 2
XLF-3SP-4	Soldering and P.C.B. In common	w/Boss	Yes	Refer to the below *1 and 2
XLF-3SP-5	Soldering and P.C.B. In common	w/Boss	No	90°Angle turned socket mounting type (p105)
XLF-3SP-6	Soldering and P.C.B. In common	w/Boss	Yes	90°Angle turned socket mounting type (p105)
XLF-3SP-7	Soldering and P.C.B. In common	Hole	No	90°Angle turned socket mounting type (p105)
XLF-3SP-8	Soldering and P.C.B. In common	Hole	Yes	90°Angle turned socket mounting type (p105)
XLF-3PV	P.C.B.	Hole	No	Vertical P.C.B Mounting
XLF-3PV-3	P.C.B.	w/Boss	No	Vertical P.C.B Mounting
XLF-3PH	P.C.B.	Hole	No	Horizontal P.C.B Mounting
XLF-3PH-3	P.C.B.	w/Boss	No	Horizontal P.C.B Mounting *1 and 2

\* 1. The hole sizes of socket mounting are shown at the DRG of page 104 and 105

2. The boss size of socket mounting is 2.5 inner hole with 4.5 out diameter x 5mm length

### General Specification

- Life : 10,000 Cycles Min.(Insertion / Withdrawal)
- Insertion / Withdrawal Force : 3~5kg · f/cm
- Contact Resistance : 20 mohms(Max.)
- Insulation Resistance : Over 100 Mohms
- Dielectric Withstanding Voltage : 500V AC
- Contact Rating : 25A, 48V DC