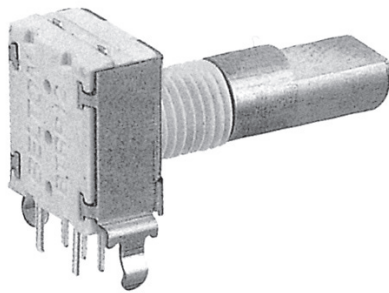


MECHANICAL ENCODER SWITCH

BTRP12 SERIES

12mm Mechanical highly reliable and miniaturized rotary encoder
(Horizontal mounting type)



Features

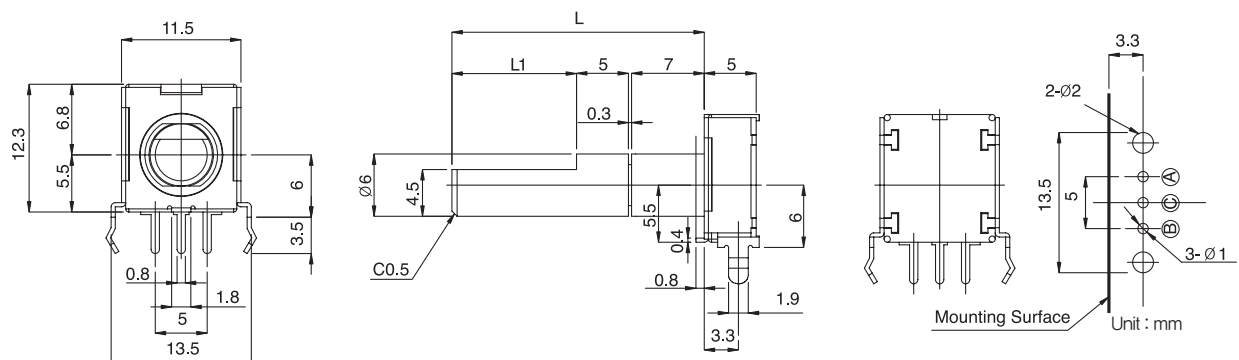
- Designed for horizontal P.C.Board mounting version
- Compact size(12.3mm : height × 11.5mm : width)
- Available with mechanical 30 steps clicks intergrated push-button switch in
- 30 pulses per rotation

Applications

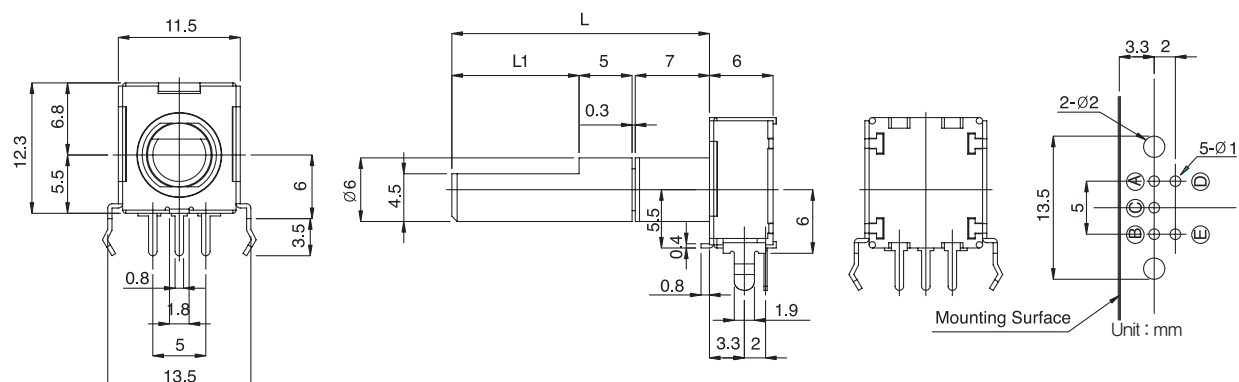
- All kinds of level control, tuning and timer setting in audio, visual equipement, ordinary household electric appliances, radio and communication equipments, etc

Standard Dimensions

BTRP12H-□□□□-□□□



BTRP12HS-□□□□-□□□



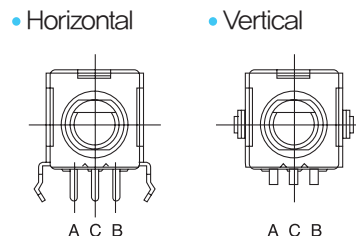
MECHANICAL ENCODER SWITCH

BTRP12 SERIES

Product Classifications

Mounting Method	Mechanical Click	Push-button switch	Pulse no.	Part no.
Horizontal (BTRP12H)	X	X	30	BTRP12H-030N-Shaft
	O	X	30	BTRP12H-030C-Shaft
	X	O	30	BTRP12HS-030N-Shaft
	O	O	30	BTRP12HS-030C-Shaft
Vertical (BTRP12V)	X	X	30	BTRP12V-030N-Shaft
	O	X	30	BTRP12V-030C-Shaft
	X	O	30	BTRP12VS-030N-Shaft
	O	O	30	BTRP12VS-030C-Shaft

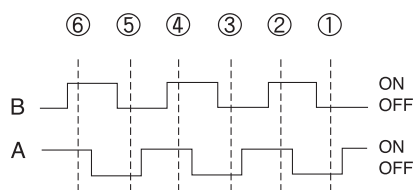
Terminal code



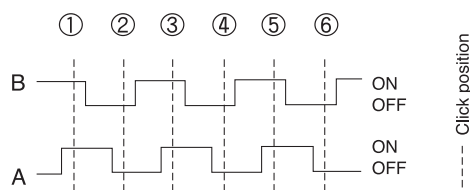
- A, B : Output terminal
- C : Common terminal

Output Wave

• Clockwise



• Counter clockwise



Electrical specifications

- Electrical Rating : 10mA, 5V DC
- Push-button switch : 50mA, 12V DC
- Chattering & Bounce : 3ms Max .
- Contact Resistance : 100 mohms Max .
- Insulation Resistance : 100 mohms at 250V DC
- Withstanding Voltage : 1min, at 300V AC
- Electrical Life : Over 50,000 cycles

Mechanical specifications

- Contact : Gold plated on the PBS
- Click No. : 30 positions per rotation=12°
- Rotational Torque : 200 ± 70 gf · cm
- Mechanical Life : Over 100,000 cycles
- Panel mounting screw strength : 5kgf · cm
- Soldering Temp. : 5sec. on the 260°C
- Temp. Range of Operating : 0°C ~+50°C

Suggested Ordering Code

