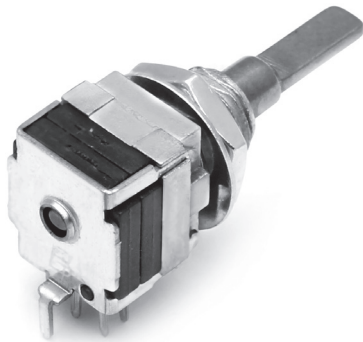


# ROTARY SWITCH

## BTDS10 SERIES DIGITAL SWITCHES

Rotary type digital switch with compact size and gold plated contacts specially for the communication equipments.



### Features

- Small and compact size(10×11.5mm)
- Detent number from 4 to 16 are available.
- Capable for horizontal and vertical mounting.
- All contact points and terminals are plated by gold plating.

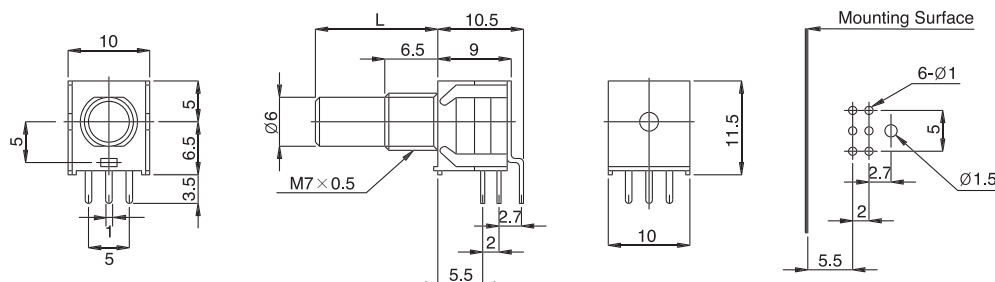
### Applications

- Suitable for the channel selector and program switches at the C.B transceiver and the communication equipments.

### Standard Dimensions

BTDS10HS-□□□-□□□-□

P.C.B Mounting Hole



### Product Classifications

NO. OF POSITIONS	4	6	8	9	10	16
ANGLE OF CHANGEOVER	20°					
NO. OF WAFER	1~3					
CODE	BINARY, BCD, GRAY					
SHAFT SHAPE	ROUND AND FLATE					

### Mechanical specifications

- Electrical life : 10,000 cycles min
- Terminal strength : 250 gf · cm for 1min
- Solderability : 230±5°C, 3 sec
- Changeover angle : Refer to the Product Classification table

### Electrical specifications

- Electrical Rating : 0.1A, 16V DC
- Contact Resistance : 1 mohms(max)
- Insulation Resistance : 100 Mohms, 250V DC
- Withstanding Voltage : 1Min. at 250V AC
- Circuits : Refer to the next page

### Rotational Torques

- Single shaft : 400±100 gf · cm
- Rotational torque can be changeable by option

# ROTARY SWITCH

## BTDS10 SERIES DIGITAL SWITCHES

### Suggested Ordering Code

BTDS10	H	S	.	1	1	6	.	R	2	0	.	1	*
--------	---	---	---	---	---	---	---	---	---	---	---	---	---

Series

Shaft length

Shaft length	15	20	25	30	ORDER
Code	15	20	25	30	DIM

Number of wafer

Number of sections	1 section	2 sections	3 sections
Code	1	2	3

Shaft style

Shaft style	Round shaft with groove	Flat shaft.
Code	R	F

Number of Stopper

Number of Stopper or positions	8	10	16
Code	08	10	16

\*Output code

Output Code	Binary(Positive)	Gray
Code	1	5

### Typical Dimensions

NO. of section	Dimension	P.C.Board mounting
1 section rotary switch (BTDS 10HO)		
1 section rotary switch (BTDS 10HM)		
2-3 section rotary switch (BTDS 10HS-200)		
Vertical (Vertical type) (BTDS 10V)	Will be produced soon.	