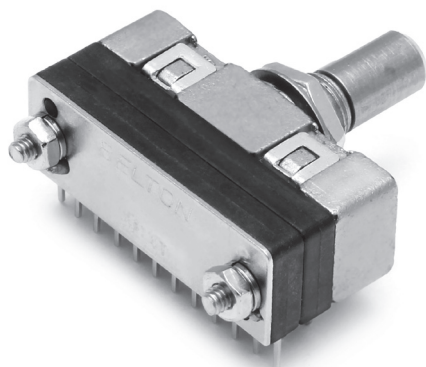


ROTARY SWITCH

Miniaturized rotary switch with 12 positioned max.



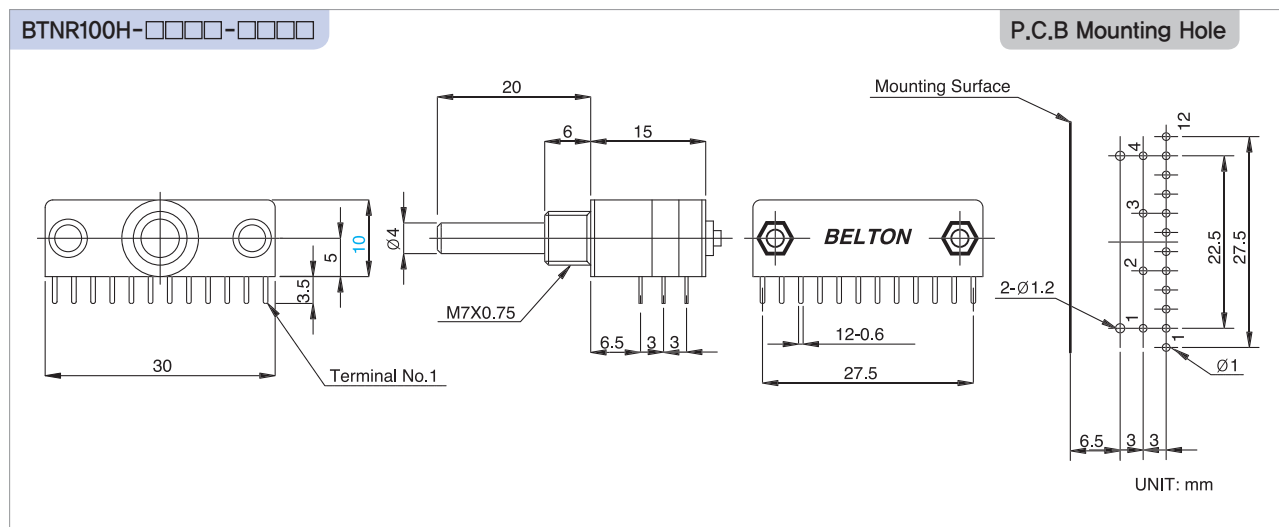
Features

- Designed for P.C. Board mounting version
- Miniaturized size (10mm : height × 30mm : width)
- 5mm mounting height from shaft-center to P.C.Board
- All switch contacts are plated by gold.

Applications

- Applicable to the wide-ranged products such as Measuring and communication equipments

Standard Dimensions



Electrical specifications

- Electrical Rating : 0.3A, 16V DC
- Contact Resistance : 50 mohms(initial)
- Insulation Resistance : 100 Mohms, 500V DC
- Withstanding Voltage : 1Min. at 500V AC
- Circuits : Refer to the next page

Mechanical specifications

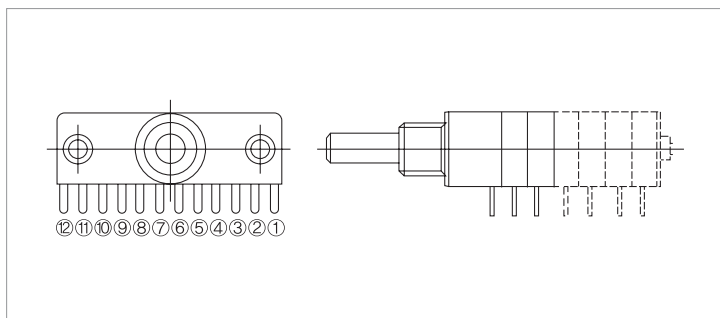
- Electrical life : 10,000 cycles min
- Terminal strength : 500gf · cm for 1 min
- Solderability : 230±5°C, 3sec
- Contact timing : shorting and non-shorting
- Rotational torque : 500±100gf.cm
- Changeover angle : 30°±0.5°

ROTARY SWITCH

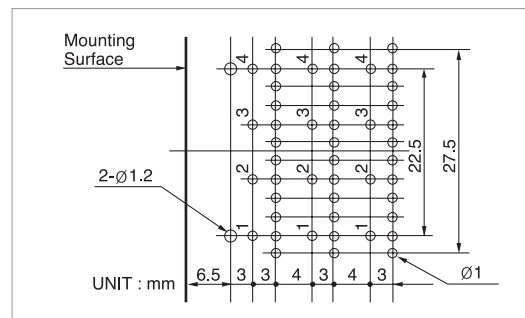
BTNR 100H SERIES

Circuit Diagrams

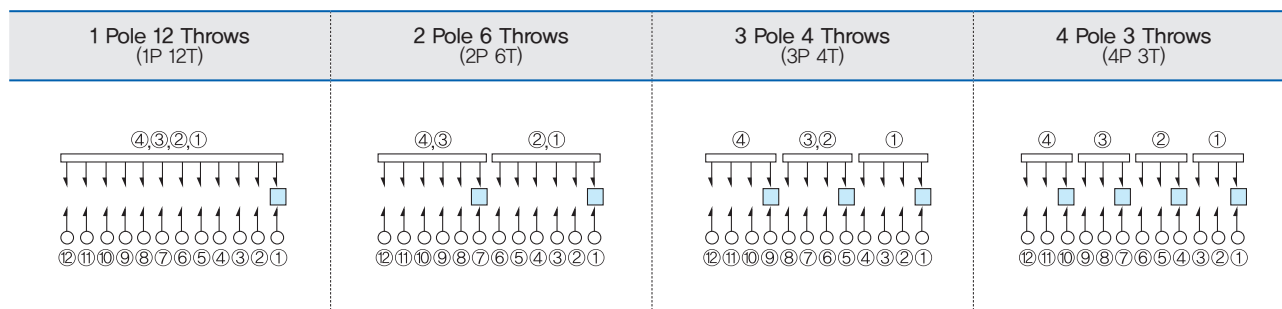
• Terminal position



• P.C.B Mounting Hole



• Circuit diagram per section



Suggested Ordering Code

BTNR100H . 1 1 2 N . 6 R 2 0										
Series				Shaft length						
Number of wafer sections				Shaft style (6mm dia)						
Number of sections				Shaft style (4mm dia)						
Code				Shaft style						
Number of positions				Changeover timing						
Code				Code						
Changeover timing				Code						
Code				Code						

Number of sections	1~6
Code	1~6

Number of positions	02~12
Code	02~12

Changeover timing	Shorting	Non-shorting
Code	S	N

Shaft length	15	20	25	30	35	40
Code	15	20	25	30	35	40

Shaft style (6mm dia)	18-tooth serration shaft	Round shaft with groove	Flat shaft
Code	6S	6R	6F

Shaft style (4mm dia)	Double side flat	Round shaft with groove	Flat shaft
Code	4H	4R	4F