

XLR RECEPTACLES (Male)

XLM 90° SERIES

Good contact connector with economical type(90°turned mount)



Features

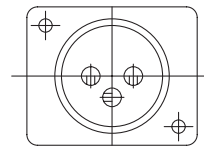
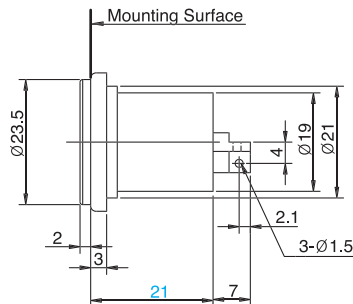
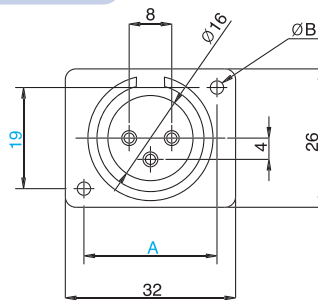
- 3 circuits male and female type
- Housing is made of thermoplastics material with glassfiber
- Vertical and horizontal P.C. Board mounting are available

Applications

- Applicable to all types of electronic music instruments such as mixing console, graphic equalizer and stereo amplifier etc.

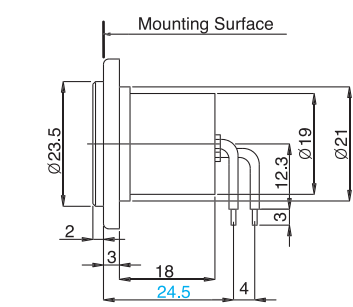
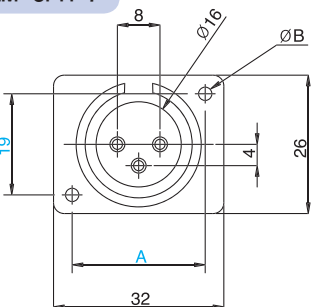
Dimensions

XLM-3SV-7

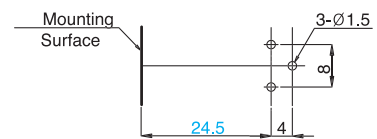


PART	A(mm)	B(ø)
#1	24,5	2,5
#2	24,5	3,5
#3	25	2,5
#4	25	3,5

XLM-3PH-7

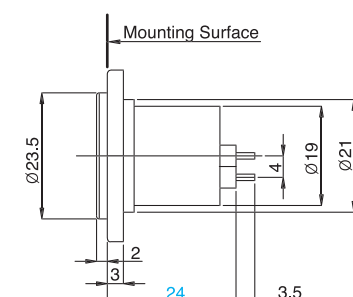
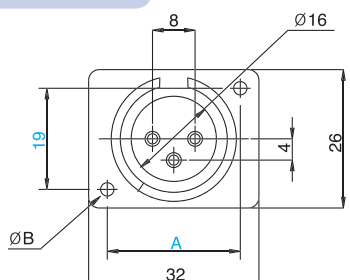


P.C.B Mounting Hole

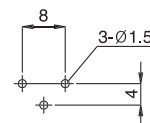


PART	A(mm)	B(ø)
#1	24,5	2,5
#2	24,5	3,5
#3	25	2,5
#4	25	3,5

XLM-3PV-7



P.C.B Mounting Hole

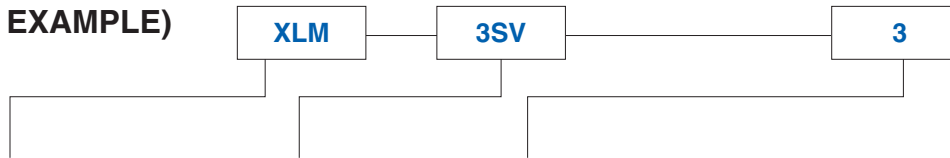


PART	A(mm)	B(ø)
#1	24,5	2,5
#2	24,5	3,5
#3	25	2,5
#4	25	3,5

XLR RECEPTACLES (Male)

XLM SERIES

(FOR EXAMPLE)



MODEL	TERMINAL SHAPE	SOCKET MOUNTING	REMARK
XLM-3SV	Soldering	Hole	<ul style="list-style-type: none"> Refer to the DRG on the page 100 Mounting hole sizes are shown at page 100
XLM-3SV-3	Soldering	w / Boss	<ul style="list-style-type: none"> Shape is same as XLM-3SV but only have mounting boss which can be mounted directly without rear mounting chassis
XLM-3SV-5	Soldering	w / Boss	<ul style="list-style-type: none"> 90° Angle turned socket mounting type, refer to page 101
XLM-3SV-7	Soldering	Hole	<ul style="list-style-type: none"> 90° Angle turned socket mounting type, refer to page 101
XLM-3PV	P.C.B	Hole	<ul style="list-style-type: none"> Vertical P.C Board mounting See the DRG. on the page 100
XLM-3PV-3	P.C.B	w / Boss	<ul style="list-style-type: none"> Vertical P.C Board mounting refer to the XLM-3SV-3 remark
XLM-3PV-5	P.C.B	w / Boss	<ul style="list-style-type: none"> 90° Angle turned socket mounting type, refer to page 101
XLM-3PV-7	P.C.B	Hole	<ul style="list-style-type: none"> 90° Angle turned socket mounting type, refer to page 101
XLM-3PH	P.C.B	Hole	<ul style="list-style-type: none"> Horizontal P.C Board mounting See the DRG on the page 100
XLM-3PH-3	P.C.B	w / Boss	<ul style="list-style-type: none"> Horizontal P.C Board mounting See the DRG on the page 100
XLM-3PH-5	P.C.B	w / Boss	<ul style="list-style-type: none"> 90° Angle turned socket and P.C Board mounting type, refer to page 101
XLM-3PH-7	P.C.B	Hole	<ul style="list-style-type: none"> 90° Angle turned socket and P.C Board mounting type, refer to page 101*

* 1. The hole sizes of socket mounting are shown at the DRG of page 100 and 101

2. The boss size of socket mounting is 2.5 inner hole with 4.5 out diameter×5mm length

General Specification

- Life : 10,000 Cycles Min.(Insertion / Withdrawal)
- Insertion / Withdrawal Force : 3~5kg · f/cm
- Contact Resistance : 20 mohms(Max.)
- Insulation Resistance : Over 100 Mohms
- Dielectric Withstanding Voltage : 500V AC
- Contact Rating : 25A, 48V DC