

OPTICAL ENCODER SWITCH

BTRTE22 SERIES

Ring Type Optical Encoder switch with 5mm height contribute to space saving and multifunctioning

NEW



Features

BTRTE22N Series :

- Plastic housing with plastic shaft
- 5mm max. height contribute to space saving and multifunctioning
- 1,000,000 life cycles with vertical mounting type
- 15 pulses per rotation with fine square wave of output
- 30 detents of mechanical click
- Light weight : 2.5g
- Size : 28.8×21.6×10.1mm

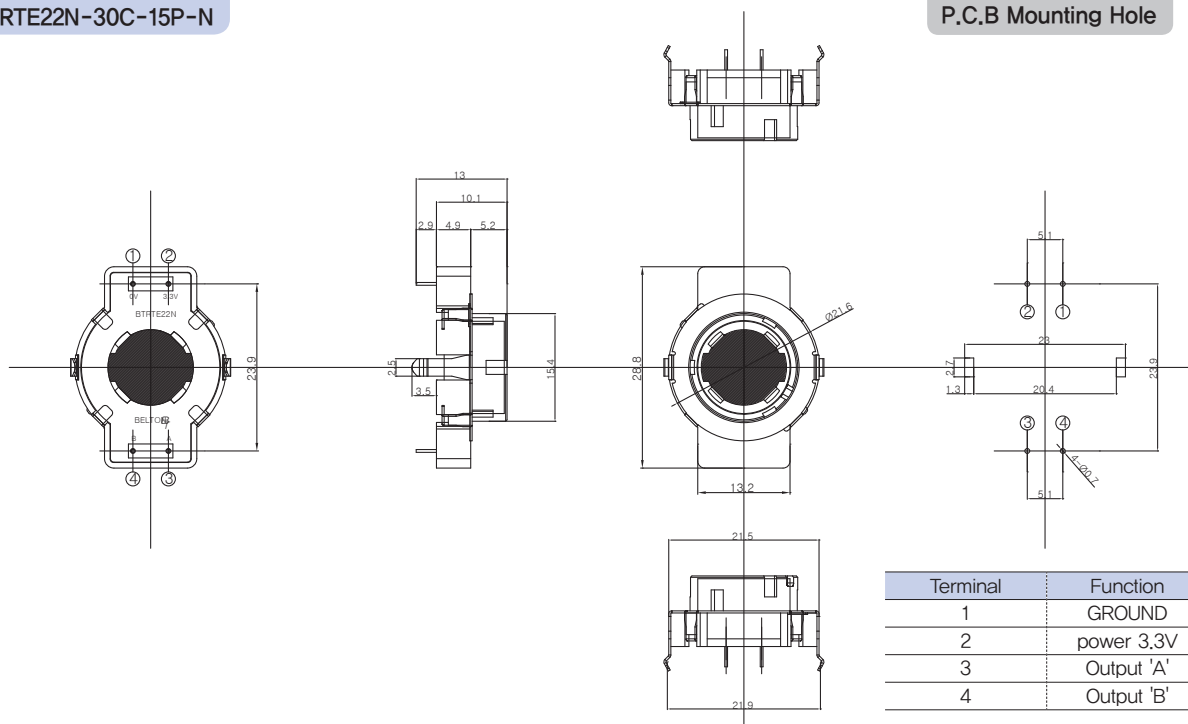
Applications

- All kinds of level control, tuning and position setting in the digitalized medical, measuring, radio, and communication equipments, etc.

Standard Dimensions

BTRTE22N-30C-15P-N

P.C.B Mounting Hole



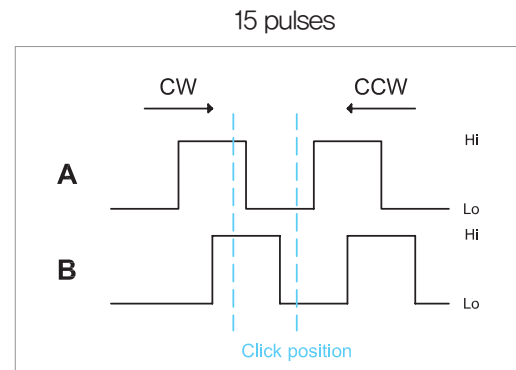
OPTICAL ENCODER SWITCH

BTRTE22 Series

Electrical specifications

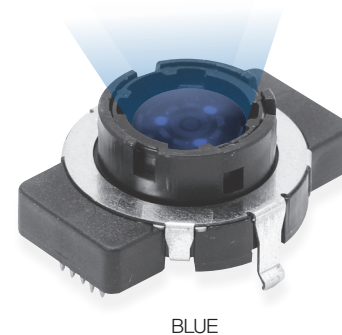
- Supplying Voltage : DC 3.3V \pm 5%
- Supplying Current : 20mA max.
- Push-button switch : 10mA, 12V DC
- Phase difference : $90^\circ \pm 45^\circ$
- Output Wave : Incremental with Rectangular wave
- Resolution : 15 pulses / rotation
- Frequency Response : 100Hz
- Insulation Resistance : 100Mohms on 250V DC
- Withstanding Voltage : 1min. at 300V AC
- Electrical Life : Over 1,000,000 cycles

Output wave



Mechanical specifications

- Mechanical Click No. : 30(12°) positions per rotation
- Rotational Torque : 100 ± 20 gf · cm
- Operating force of Push-button switch : 5 ± 2 gf
- Click & Push-button Mechanical Life : Over 1,000,000 cycles
- Soldering Temp. : 5sec. On the 260°C
- Temp. Range of Operating : $0^\circ\text{C} \sim +50^\circ\text{C}$



BLUE

Suggested Ordering Code

Ring Type Encoder22 Series Specification

<div> <div>BTRTE22</div> <div>P</div> <div>-</div> <div>30</div> <div>C</div> <div>-</div> <div>15</div> <div>-</div> <div>P</div> <div>-</div> <div>W</div> <div>B</div> <div>G</div> </div>												
MODEL Name	Push-button Switch	No. of Detent	Mechanical Click	No. of Pulse	Terminal Type	LED color						
BELTON Ring Type Encoder 22	N : without	30(fixed)	N : without	15(fixed)	P : pin type(fixed)	W : White						
	P : with		C : with			B : Blue						
						G : Green						
						R : Red						
						O : Orange						
						N : Without						