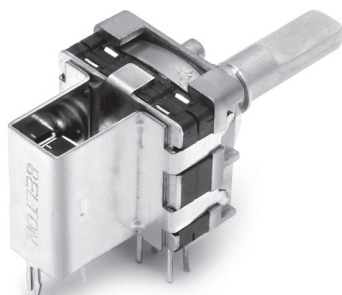


# ROTARY SWITCH

## BTDS20 SERIES DIGITAL SWITCHES

### Rotary digital code switch with push-on switch function



#### Features

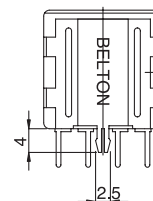
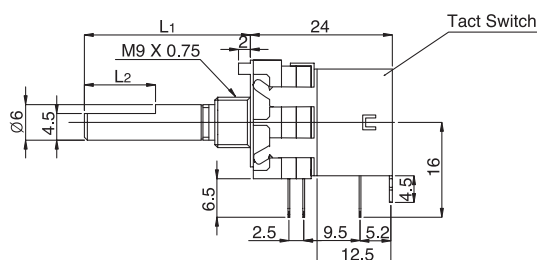
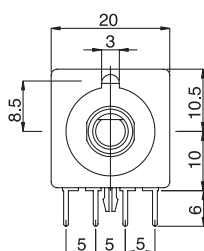
- Wonderful design for Digital code switch + Push-on switch
- Suitable for setting code with push-on switch
- Detent number from 8 to 40 are available

#### Applications

- For all kinds of digital program switches and C.B transceiver
- Special use for guitar amp and mixing console with DSP program

#### Standard Dimensions

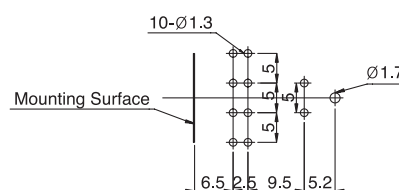
BTDS20HPT-□□□-□□□-□



#### Product Classifications

NO.OF POSITIONS	8	10	16	18	24	32	40
ANGLE OF CHANGEOVER	45°	36°	22.5°	20°	15°	11.25°	9°
BITS PER STEP	7						
NO.OF WAFER	1-3						
CODE	BINARY, BCD, GRAY						
SHAFT SHAPE	18 SERRATION, R AND FLATE						

#### P.C.B Mounting Hole



#### Electrical specifications

- Electrical Rating : 0.1A, 15V DC
- Contact Resistance : 1 mohms (max)
- Insulation Resistance : 100 Mohms, 500V DC
- Withstanding Voltage : 1Min. at 250V AC
- Circuits : Refer to the table of cut put code
- Push-on switch : 50mA, 12V DC

#### Rotational Torques

- Single shaft : 700±300gf · cm
- Rotational torque can be changeable by option
- Push-on torque can be changeable by option

#### Mechanical specifications

- Electrical life : 10,000 cycles min
- Terminal strength : 250gf · cm for 1min
- Solderability : 230±5°C, 3sec
- Changeover angle : Refer to the Product Classification table

#### Push-on switch(Tact switch) specifications

- Push travel : 0.8±0.2mm Max
- Push force : 1,500±500gf · cm
- Electrical Rating : 0.5A, 12V DC

## BTDS20V SERIES DIGITAL SWITCHES

The diagram illustrates the breakdown of the model name **BTDS20H-108R20-1** into its components:

- Series:** BTDS20H
- Number of wafer:** 1
- Number of section:** 0
- Number of Stopper or positions:** 8
- Shaft length:** 20
- Shaft style:** R
- Code:** 1

Below the diagram, two tables provide the code mappings for the Number of Stopper or positions and the Shaft style.

Number of Stopper or positions								
Number of Stopper or positions	8	10	12	16	18	24	32	40
Code	08	10	12	16	18	24	32	40

Shaft style			
Shaft style	18-tooth serration shaft	Round shaft with groove	Flat shaft
Code	S	R	F

[illegible]