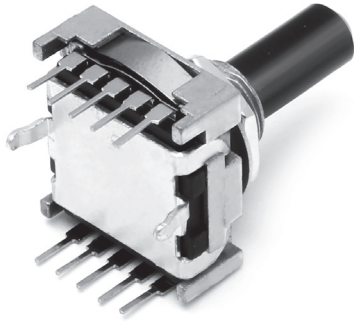


# ROTARY SWITCH

## BTSR18V SERIES

Low-profile vertical rotary switch with compact design



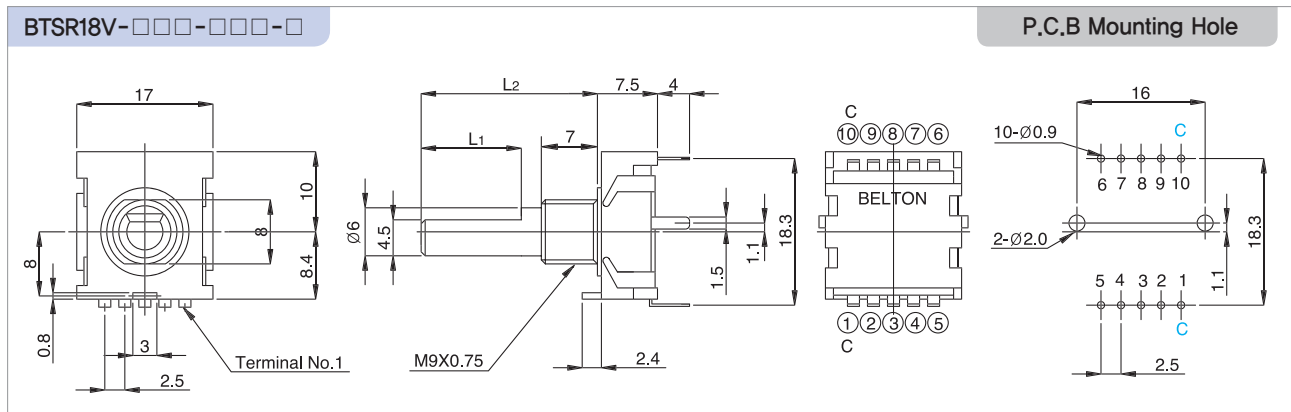
### Features

- Low-profile one section vertical mounting structure
- Compact size(17mm×18.7mm : width×height)
- Changeable plastic shaft length

### Applications

- For all kinds of electronic equipments such as audio amplifier, tuner and radio communication equipments

### Standard Dimensions



### Electrical specifications

- Electrical Rating : 0.3A, 16V DC
- Contact Resistance : 50 mohms(initial)
- Insulation Resistance : 100 Mohms at 500V DC
- Withstanding Voltage : 1Min. at 100V AC
- Circuits : Refer to the next page

### Mechanical specifications

- Electrical life : 10,000 cycles min
- Changeover angle : 30°
- No. of position : 2~8(1 pole)  
2~4(2poles)
- Contact timing : non-shorting
- Shaft length : 15, 20, 25mm
- Rotational torque : 600 ± 300 gf · cm
- Solderability : 230 ± 5°C, 3sec
- Terminal shape : P.C.Board type only
- No. of section : 1 section

## BTSR18V SERIES

Number of poles	1 pole	2 poles
Circuit diagram		

The diagram illustrates the structure of the motor model number **BTSR18V-15N-F25-1**, which is divided into six main sections:

- Series:** BTSR18V
- Number of poles:** 1, 2
- Number of positions:** 2~8
- Material of shaft:** Mold shaft, Metal shaft
- Shaft length:** 15, 20, 25
- Shaft style:** Flat shaft, Serration

The model number is broken down as follows:

- BTSR18V**: Series
- : Separator
- 1**: Number of poles (1 or 2)
- 5**: Number of positions (2~8)
- N**: Material of shaft (Mold shaft or Metal shaft)
- : Separator
- F**: Shaft length (15, 20, or 25)
- 2**: Shaft style (Flat shaft or Serration)
- 5**: Shaft style (Flat shaft or Serration)
- : Separator
- 1**: Shaft style (Flat shaft or Serration)

# ROTARY SWITCH

## BTR SERIES

### Summerized general specifications of Rotary Switches

#### Electrical specifications

No.	Typical Series	Electrical Rating	Contact Resistance	Insulation Resistance	Withstanding Voltage
1	BTNR 100	0.1A, 12V DC	100 mohms max.	100 Mohms at 500V DC	500V AC for 1 min.
2	BTSR 10H	0.1A, 16V DC	50 mohms max.	100 Mohms at 500V DC	500V AC for 1 min.
3	BTSR 16H	0.3A, 16V DC	50 mohms max.	100 Mohms at 500V DC	500V AC for 1 min.
4	BTSR 12V	0.1A, 16V DC	50 mohms max.	100 Mohms at 100V DC	100V AC for 1 min.
5	BTSR 18V	0.3A, 16V DC	50 mohms max.	100 Mohms at 500V DC	500V AC for 1 min.

#### Mechanical specifications

No.	Typical Series	Rotational Torgue	Operating Life	Others
1	BTNR 100	1,000 $\pm$ 500 gf · cm	10,000 cycles min.	* Operating Temp. range : -10~+60°C * Cold proof Temp. range : -20 $\pm$ 2°C for 96 hr * Hot proof Temp. range : +85 $\pm$ 2°C for 96hr * Solderability : 230 $\pm$ 5°C, 3 $\pm$ 0.5 sec * Solder heat resistance : 260 $\pm$ 5°C, 5 sec
2	BTSR 10H	500 $\pm$ 200 gf · cm	10,000 cycles min.	
3	BTSR 16H	500 $\pm$ 200 gf · cm	10,000 cycles min.	
4	BTSR 12V	100 $\pm$ 50 gf · cm	10,000 cycles min.	
5	BTSR 18V	600 $\pm$ 300 gf · cm	10,000 cycles min.	

