

XLR RECEPTACLES (Male+Female)

XLFM SERIES

Male+Female combination XLR receptacle block with ground terminal



Features

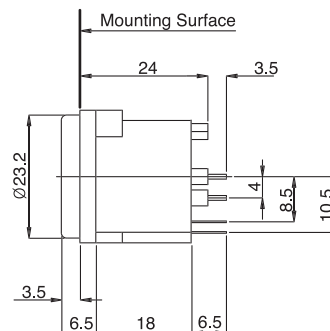
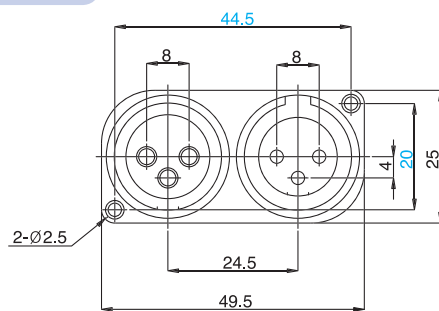
- 3 circuits male and female combination with ground terminal
- Housing is made of thermoplastics material with glassfiber
- Vertical and horizontal P.C. Board mounting are available
- Block construction improve assembly process with reducing mounting operation

Applications

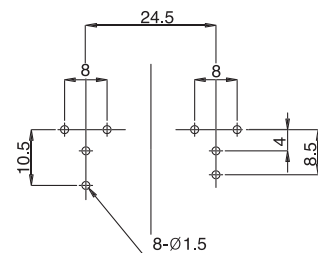
- Applicable to all types of electronic music instruments like as mixing console, graphic equalizer and stereo amplifier and digital equipments

Dimensions

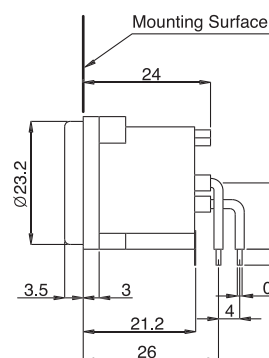
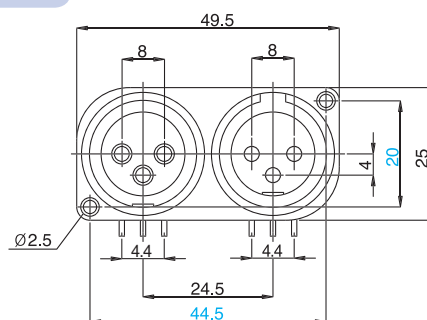
XLFM-3PV



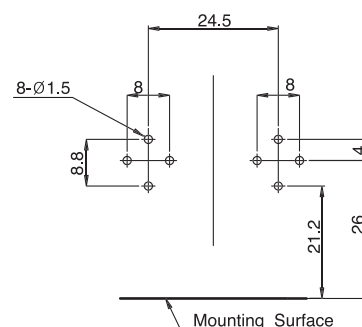
P.C.B Mounting Hole



XLFM-3PH



P.C.B Mounting Hole



General Specification

- Electrical Life : 10,000 Cycles Min.
(Insertion / Withdrawal)
- Insertion / Withdrawal Force : 3~5kg · f/cm
- Contact Resistance : 20 mohms(Max.)
- Insulation Resistance : Over 100 Mohms, 500V DC
- Dielectric Withstanding Voltage : 1min, at 500V AC
- Contact Rating : 25A, 48V DC