

# AC INLET (2P+Ground)

## BACI SERIES

### AC inlet with 2 line Fuse Holder + voltage selector



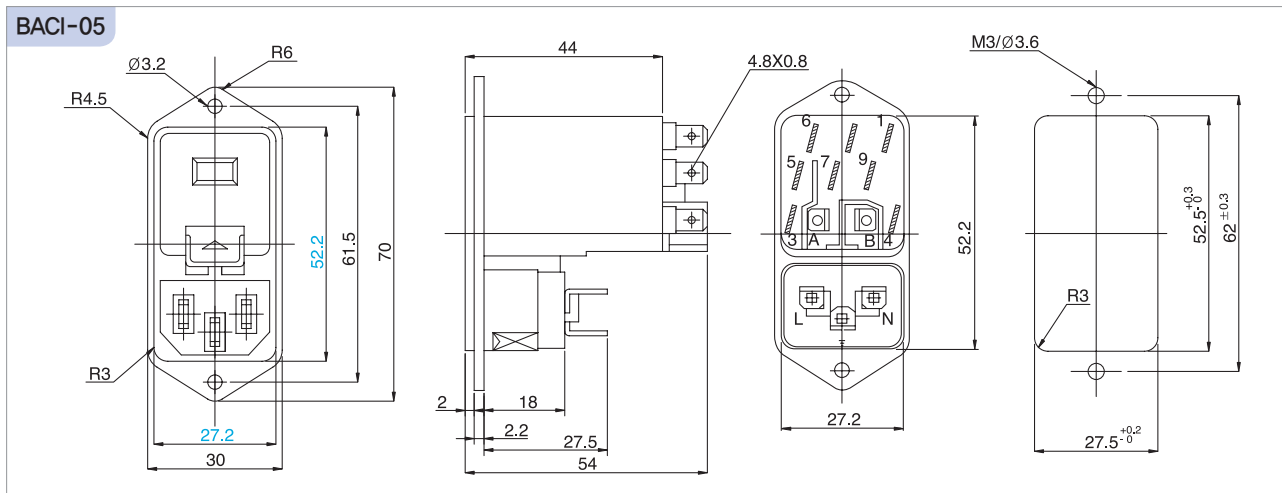
#### Features

- Constructed by 2 Poles fuse holder (6,3×32mm) and multi-step voltage selector
- Enclosing material is made of glassfiber filled thermoplastics

#### Applications

- Applicable to all type of electronic equipments such as measuring instruments, electronic musical instruments and OA equipments.

#### Dimensions



**CODE:** **BACI** **0.5**

TERMINAL		CONNECTION		VOLTAGE SELECTOR CIRCUITS		FUSE USAGE
A		B	C	1	2	A
5 6 7 8 9 10 ○ ○ ○ ○ ○ ○		5 6 7 8 9 10 ○ ○ ○ ○ ○ ○	5 6 7 8 9 10 ○ ○ ○ ○ ○ ○	5 6 7 8 9 10 ● ● ● ● ● ●	110 5 6 7 8 9 10 ○ ○ ○ ○ ○ ○	A ● B ●
3 4 ○ ○		3 4 ○ ○	3 4 ○ ○			B
A ○ B ○		A ● B ○	A ● B ●			A ● B ○
L ○ N ○		L ● N ○	L ● N ●			C
				5 6 7 8 9 10 ● ● ● ● ● ●	5 6 7 8 9 10 ○ ○ ○ ○ ○ ○	A ○ B ●
						●: LIVE ○: DUMMY

#### Electrical specifications

- Power rating : 6A, 250V AC
- Withstanding voltage : 1 min. at 1,000V AC
- Insulation Resistance : 100 Mohms at 500V DC
- Contact Resistance : 30 mohms, max.
- No. of poles : 2 + ground
- Voltage selector : 100V-120V-220V-240V

#### Mechanical specifications

- Insulation material : PBT with 15% glassfiber
- Operating temperature : -30°C~80°C
- Fuse size : 6,35×31,8mm
- UL, Approved