

# ROTARY SWITCH

## BTMR16 SERIES

16mm diameter Rotary switch comply with MIL-S-3786C and MIL-STD810C specification

NEW



### Features

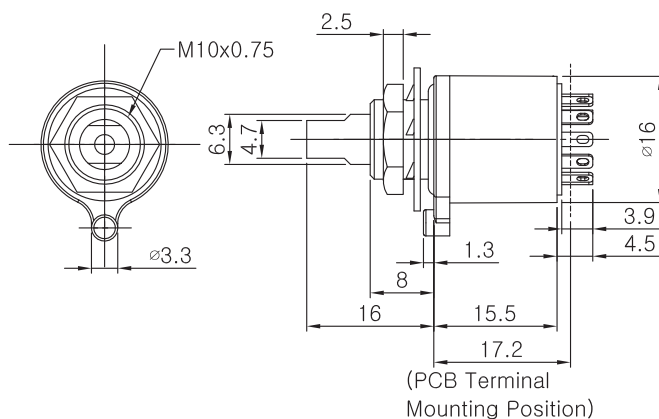
- Military qualified version
- 10W electric power rating
- Shorting and Non-shorting switch mode
- 30° angles of throw
- Up to 4 Poles on 1 Deck
- Up to 12 positions per Switch
- Available for Solder or PCB Terminal
- Operating Temp : -40 ~ +71°C
- Storage Temp : -55 ~ +85°C

### Applications

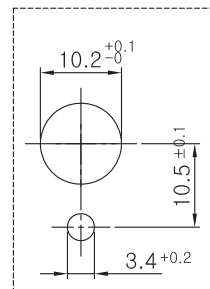
- For all kinds of electric and electronic equipments, specially for military equipments such as wireless transceiver and communication equipments under MIL spec. condition.

### Standard Dimensions

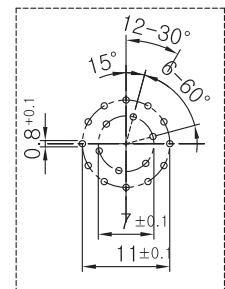
BTMR16□-□□-□□-□



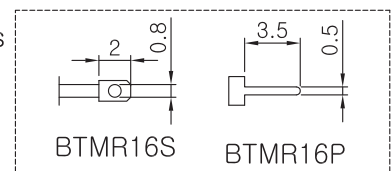
Chassis Mounting Hole



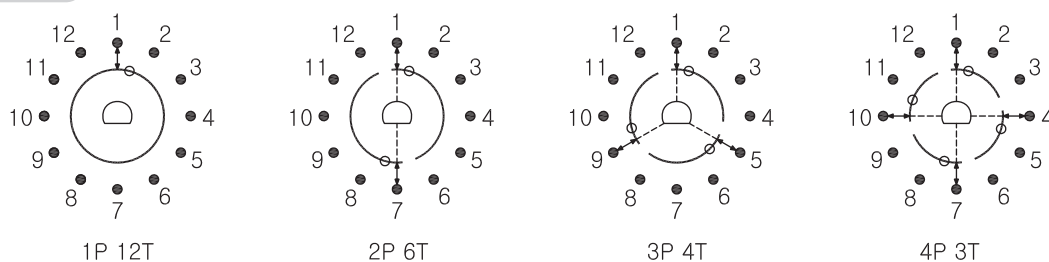
PCB Mounting Hole



Terminals



### Circuit Diagram



# ROTARY SWITCH

## BTMR16 SERIES

### Electrical specifications

- Electrical power Rating : 10 VA / W Max.
- Switching voltage : 120 V ~ 150 V. Max.
- Switching current : 350 mA Max
- Contact resistance (Initial) :  $\leq 20\text{m ohms}$
- Withstanding voltage : AC 1,000 V, 1 Min
- Insulation resistance : Over 100 Giga ohms at 1 KV AC
- Capacitance between 2 contacts :  $\leq 4\text{ pF}$

### Mechanical specifications

- Switch life : 25,000 cycles with load
- Switching mode : Shorting or Non-shorting
- Stops : Fixed or without stop
- Operating torque : 10 to 20 NCm (MIL-version)
- Stop strength : 170 NCm Max. (MIL-version)
- Fastening torque : 170 NCm Max. (MIL-version)
- Vibratory strength : 10 g, 11 ms
- Shock strength : 50 g, 11 ms
- Dust protection : Bank sealed
- Water proofing : Up to 0.2 bar on the front panel and shaft seal
- Soldering temperature max. : 5 s at 280 °C and 3 s at 350 °C (Hand Solder)

### Suggested Ordering Code

