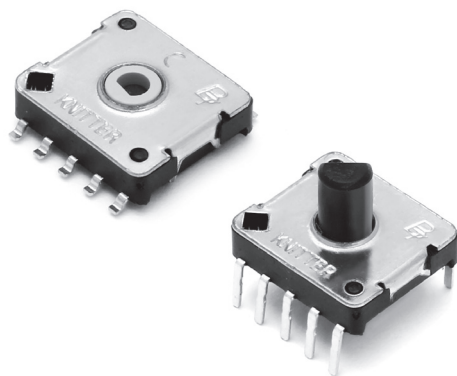


ROTARY SWITCH

BTSR12V SERIES

Simplest switch function with low-profile vertical mounting
& available reflow solderable type



Features

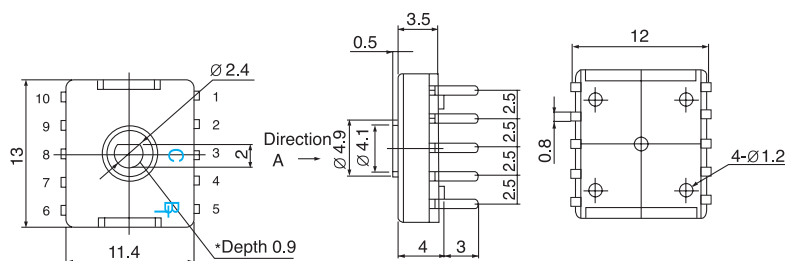
- 4mm height low-profile vertical switch
- Miniaturized size
(13mm×12.4mm : width×4mm : height)
- Reflow solderable type available

Applications

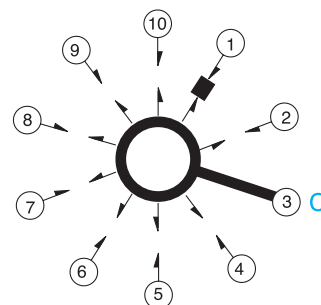
- Signal selector for all kinds of electronic equipments and multi-signal source selector

Standard Dimensions

BTSR12VN-0 9



Circuit Diagrams



Electrical specifications

- Electrical Rating : 0.1A, 16V DC
- Contact Resistance : 50 mohms(initial)
- Insulation Resistance : 100 Mohms at 100V DC
- Withstanding Voltage : 1Min. at 1 00V AC
- Circuits : Refer to the next page

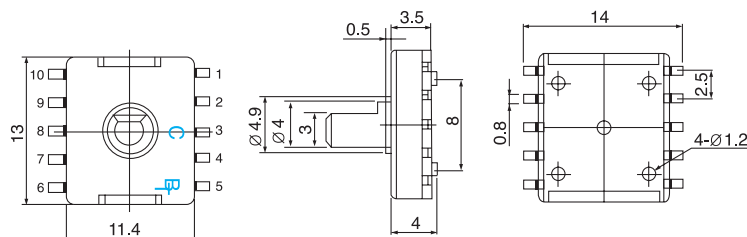
Mechanical specifications

- Electrical life : 10,000 cycles min
- Changeover angle : 40°
- No. of position : 9(endless)
- No. of pole : 1
- Contact timing : non-shorting
- Solderability : 230 ± 5°C, 3sec
- Terminal shape : P.C.Board type only
- Shaft shape : Flat type
- Operating force : 100 ± 50 gf · cm

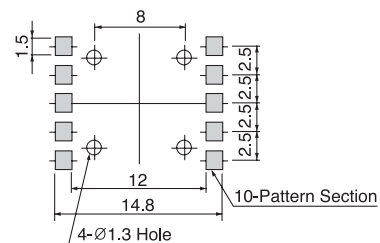
ROTARY SWITCH

BTSR12V SERIES

BTSR12VT-09

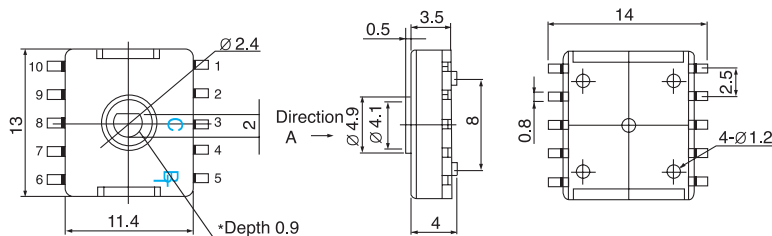


P.C.B Pattern

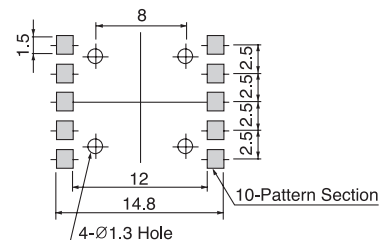


*P.C.Board mounting hole and solder pattern dimensions
(Viewed from the direction A)

BTSR12VS-09



P.C.B Pattern



*P.C.Board mounting hole and solder pattern dimensions
(Viewed from the direction A)

Suggested Ordering Code

| | | | |
|----------------|----------|----------|----------|
| BTSR12V | . | 0 | 9 |
|----------------|----------|----------|----------|

Series

Construction

| | |
|--------------|-----|
| Construction | 1~3 |
| Code | 0 |

Number of positions

| | | |
|---------------------|---|---|
| Number of positions | 9 | 5 |
| Code | 9 | 5 |

ROTARY SWITCH

BTR SERIES

Summerized general specifications of Rotary Switches

Electrical specifications

| No. | Typical Series | Electrical Rating | Contact Resistance | Insulation Resistance | Withstanding Voltage |
|-----|----------------|-------------------|--------------------|-----------------------|----------------------|
| 1 | BTNR 100 | 0.1A, 12V DC | 100 mohms max. | 100 Mohms at 500V DC | 500V AC for 1 min. |
| 2 | BTSR 10H | 0.1A, 16V DC | 50 mohms max. | 100 Mohms at 500V DC | 500V AC for 1 min. |
| 3 | BTSR 16H | 0.3A, 16V DC | 50 mohms max. | 100 Mohms at 500V DC | 500V AC for 1 min. |
| 4 | BTSR 12V | 0.1A, 16V DC | 50 mohms max. | 100 Mohms at 100V DC | 100V AC for 1 min. |
| 5 | BTSR 18V | 0.3A, 16V DC | 50 mohms max. | 100 Mohms at 500V DC | 500V AC for 1 min. |

Mechanical specifications

| No. | Typical Series | Rotational Torgue | Operating Life | Others |
|-----|----------------|-------------------------|--------------------|--|
| 1 | BTNR 100 | 1,000 \pm 500 gf · cm | 10,000 cycles min. | * Operating Temp. range : -10~+60°C * Cold proof Temp. range : -20 \pm 2°C for 96 hr * Hot proof Temp. range : +85 \pm 2°C for 96hr * Solderability : 230 \pm 5°C, 3 \pm 0.5 sec * Solder heat resistance : 260 \pm 5°C, 5 sec |
| 2 | BTSR 10H | 500 \pm 200 gf · cm | 10,000 cycles min. | |
| 3 | BTSR 16H | 500 \pm 200 gf · cm | 10,000 cycles min. | |
| 4 | BTSR 12V | 100 \pm 50 gf · cm | 10,000 cycles min. | |
| 5 | BTSR 18V | 600 \pm 300 gf · cm | 10,000 cycles min. | |

