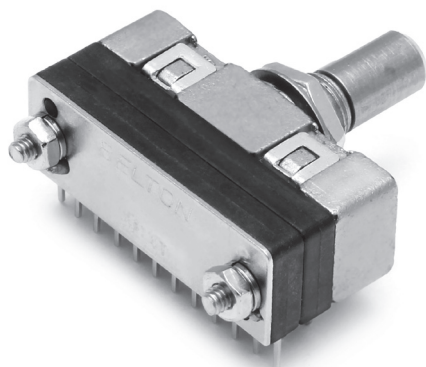


ROTARY SWITCH

Miniaturized rotary switch with 12 positioned max.



Features

- Designed for P.C. Board mounting version
- Miniaturized size (10mm : height × 30mm : width)
- 5mm mounting height from shaft-center to P.C.Board
- All switch contacts are plated by gold.

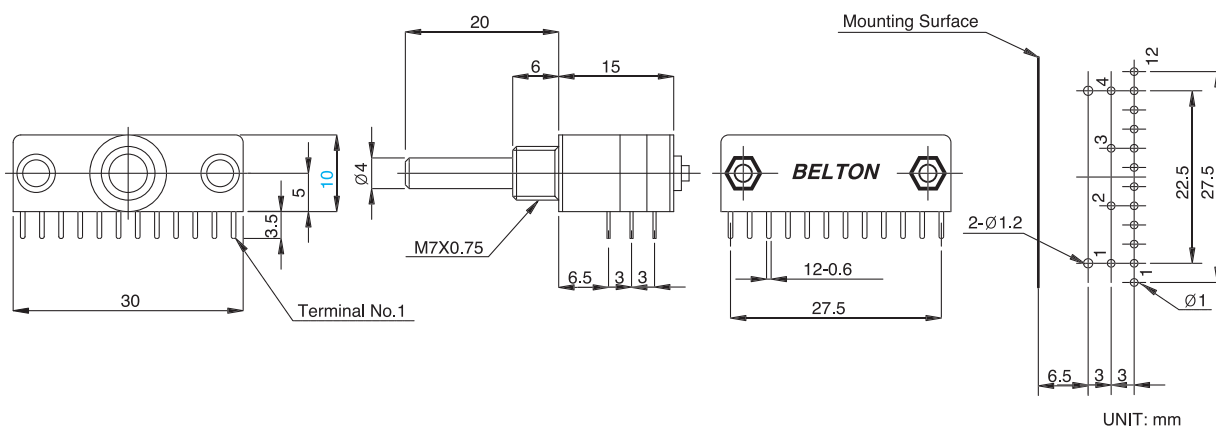
Applications

- Applicable to the wide-ranged products such as Measuring and communication equipments

Standard Dimensions

BTNR100H-□□□□-□□□□

P.C.B Mounting Hole



Electrical specifications

- Electrical Rating : 0.3A, 16V DC
- Contact Resistance : 50 mohms(initial)
- Insulation Resistance : 100 Mohms, 500V DC
- Withstanding Voltage : 1Min. at 500V AC
- Circuits : Refer to the next page

Mechanical specifications

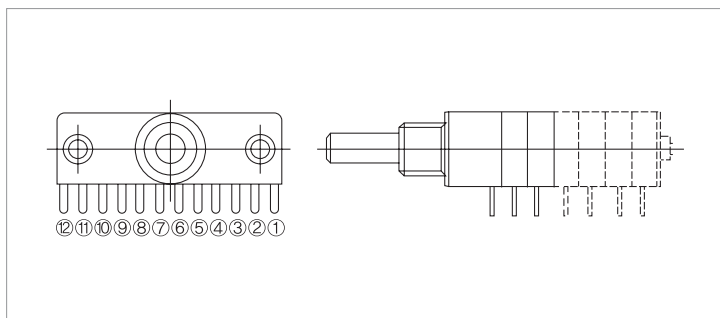
- Electrical life : 10,000 cycles min
- Terminal strength : 500gf · cm for 1 min
- Solderability : 230±5°C, 3sec
- Contact timing : shorting and non-shorting
- Rotational torque : 500±100gf.cm
- Changeover angle : 30°±0.5°

ROTARY SWITCH

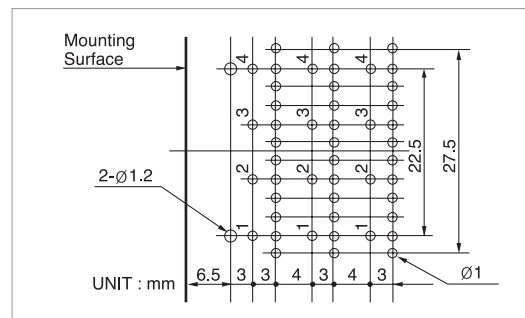
BTNR 100H SERIES

Circuit Diagrams

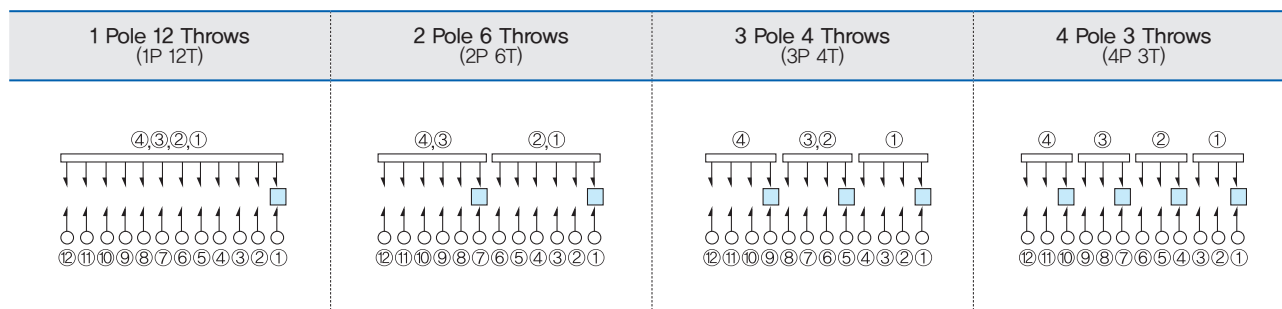
• Terminal position



• P.C.B Mounting Hole



• Circuit diagram per section



Suggested Ordering Code

BTNR100H . 1 1 2 N . 6 R 2 0										
Series										
Number of wafer sections				Shaft length						
Number of sections				Shaft length						
Code				Code						
Number of positions				Shaft style (6mm dia)						
Number of positions				Shaft style						
Code				Code						
Changeover timing				Shaft style (4mm dia)						
Changeover timing				Shaft style						
Code				Code						