

SPEAKER CONNECTOR

BTSP SERIES

Designed for easy connection with male speaker connector on the speaker cabinet



Features

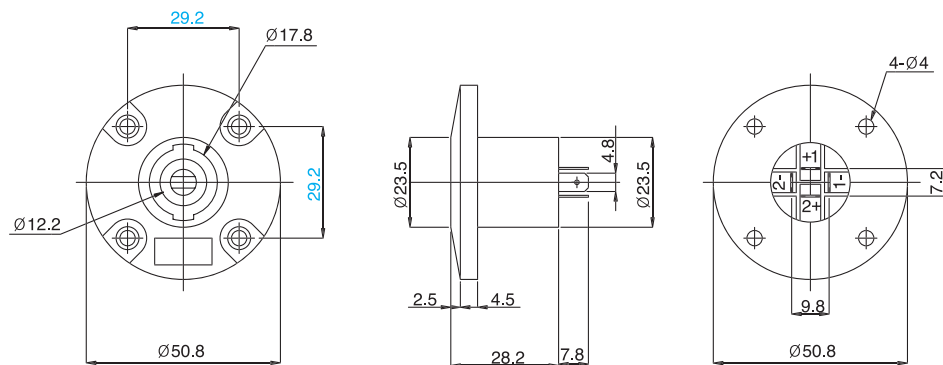
- 4 poles connector with sleeve and multiple finger contact construction
- P.C.Board terminal and easy assemble with snap-in terminal

Applications

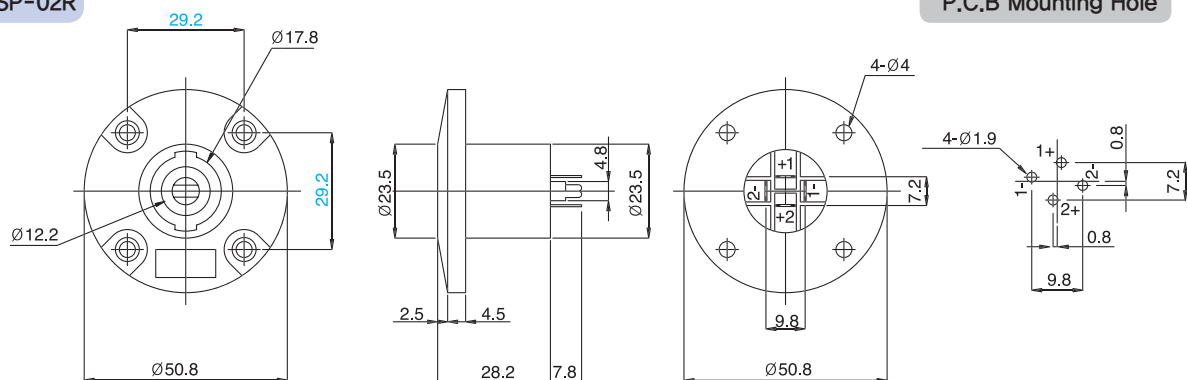
- For all kinds of loud-speaker and amplifier connector

Dimensions

BTSP-01R



BTSP-02R



General Specification

- Electrical Rating : 30A, 12V(source)
- Operating voltage : 250V AC
- Contact Resistance : 20 mohms
- Insulation Resistance : Over 100 Mohms 500V DC
- Withstanding Voltage : 1min. at 500V AC
- Electrical Life : 10,000 cycles
- Operating Temperature : $-30^{\circ}\text{C} \sim 80^{\circ}\text{C}$