

VACUUM TUBE SOCKET

VT8 SERIES

High Insulated 8 Pin Vacuum Tube Socket



Features

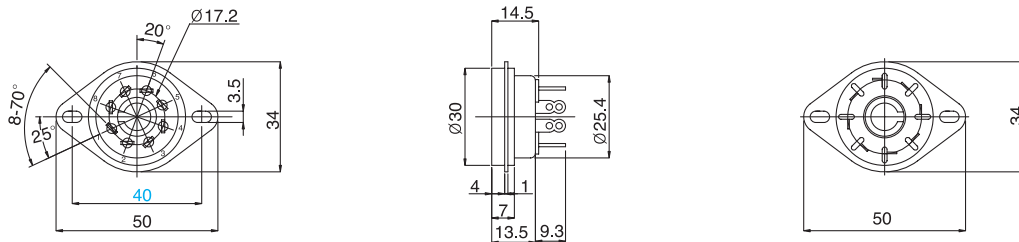
- With panel saddle mounting
- Easy mount with the saddle of extruded screw hole
- Phosphorus bronze terminal pin with solder plating
- Glassfiber filled PPS Insulating material

Applications

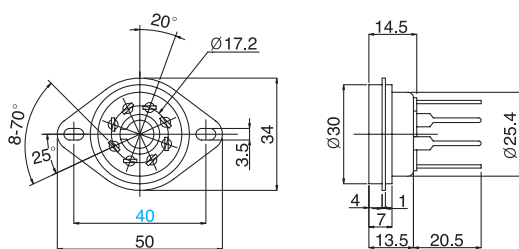
- Applicable to all types of electric and electronic equipments using vacuum tube and relay

Dimensions

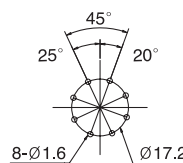
VT8-ST



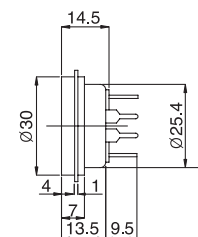
VT8-PT



P.C.B Mounting Hole

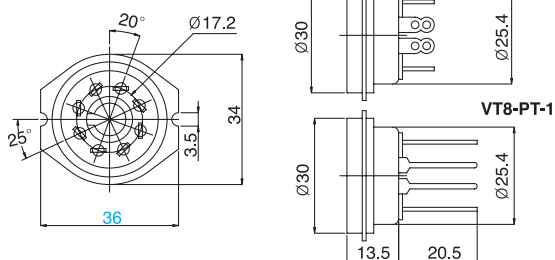


VT8-PTS



VT8-ST-1

VT8-PT-1



VT8-PTS-B

