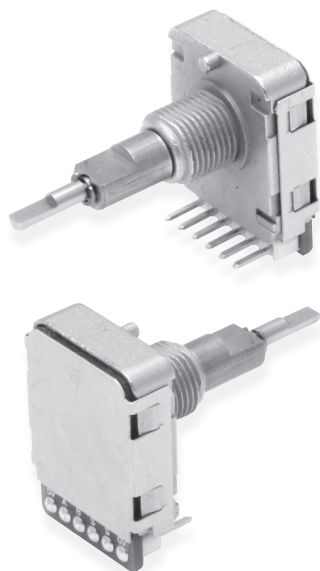


OPTICAL ENCODER SWITCH

BTRES19 SERIES

Metal Housing Optical Encoder switch,
Dual shaft with Separated Push-button switch function



Features

BTRES19G Series :

- Separated push-button switch function
- Zn diecasting housing with metal shaft
- 7mm max. thin thickness construction
- 1,000,000 life cycles with vertical/horizontal mounting type
- 6, 16, 24 pulses per rotation with fine square wave of output
- 16, 24 detents of mechanical click with push-button switch
- Light weight : 17g
- Size : 19×25mm

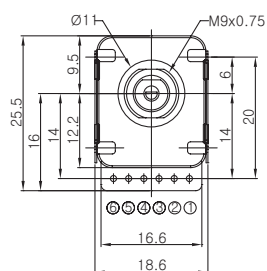
Applications

- All kinds of level control, tuning and position setting in the digitalized medical, measuring, radio, and communication equipments, etc.

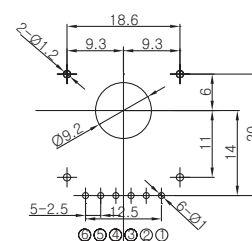
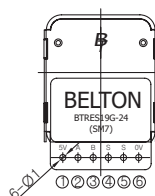
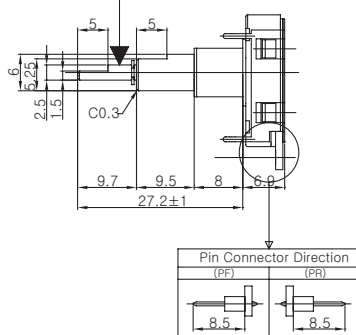
Standard Dimensions

BTRES19VGM-24C-M2F9.5-MF9.7-□□-□F

P.C.B mounting Hole



Non-Turn Pushbutton Shaft



Mounting Hole Detail

Terminal	Function
1	Power 5V
2	Output 'A'
3	Output 'B'
4	For Switch
5	For Switch
6	GROUND

BTRES19 SERIES

- Supplying Voltage : DC 3.3 V \pm 5 %, DC 5 V \pm 5%
- Supplying Current : 20 mA max.
- Push-button switch : 10 mA, 12 V DC
- Phase difference : 90 ° \pm 45 °
- Output Wave : Incremental with Rectangular wave
- Resolution : 6, 16, 24 pulses / rotation
- Frequency Response : 100 Hz
- Insulation Resistance : 100 Mohms on 250 V DC
- Withstanding Voltage : 1 min. at 300 V AC
- Electrical Life : Over 1,000,000 cycles

- Mechanical Click No. : 16 (22.5 °), 24 (15 °) positions per rotation
- Rotational Torque : 50 ± 20 gf·cm
- Operating force of Push-button switch : 5 ± 2 gf
- Click & Push-button Mechanical Life : Over 1,000,000 cycles
- Soldering Temp. : 5 sec. On the 260 °C
- Temp. Range of Operating : 0 °C ~ + 50 °C
- Panel mounting screw strength : 8 Kgf·cm

