

SPEAKER CONNECTOR

BTSP SERIES

Designed for easy connection with male speaker connector



Features

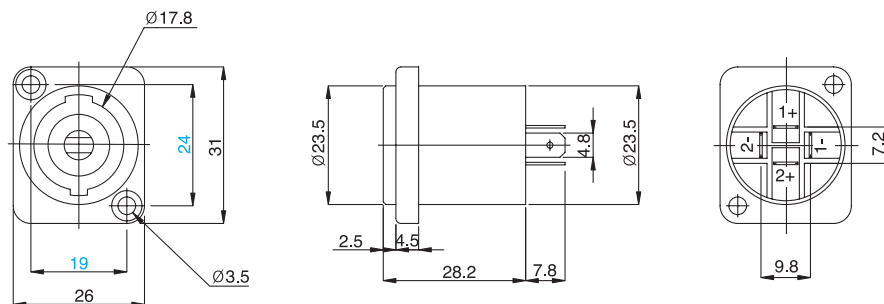
- 4 poles connector with sleeve and multiple finger contact construction
- P.C.Board terminal and easy assemble with snap-in terminal

Applications

- For all kinds of loud-speaker and amplifier connector

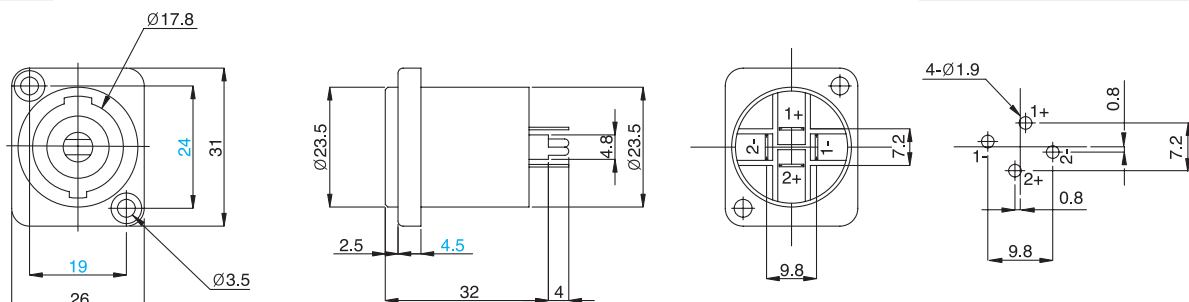
Dimensions

BTSP-01



BTSP-02

P.C.B Mounting Hole



General Specification

- Electrical Rating : 30A, 12V(source)
- Operating voltage : 250V AC
- Contact Resistance : 20 mohms
- Insulation Resistance : Over 100 Mohms
- Withstanding Voltage : 1min, at 500V AC
- Electrical Life : 10,000 cycles
- Operating Temperature : -30°C ~ 80°C